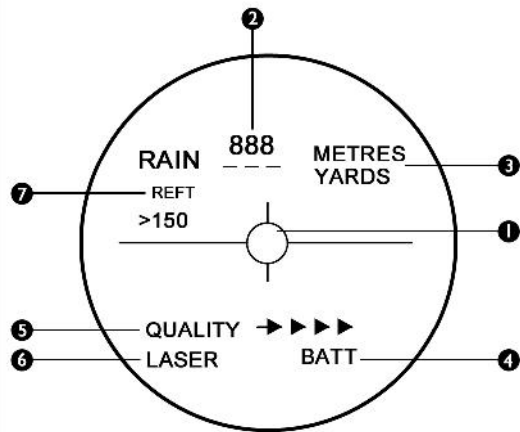


## LCD DISPLAY

1. Centre aim point
2. Distance display
3. Distance unit
4. Low battery indicator
5. Distance measuring quality
6. Laser emission, pulses when in use
7. Modes:
  - RAIN - eliminates rain interference
  - REFL - for use in foggy conditions
  - >150 - eliminates interfering objects within 150m eg. electrical wires and branches



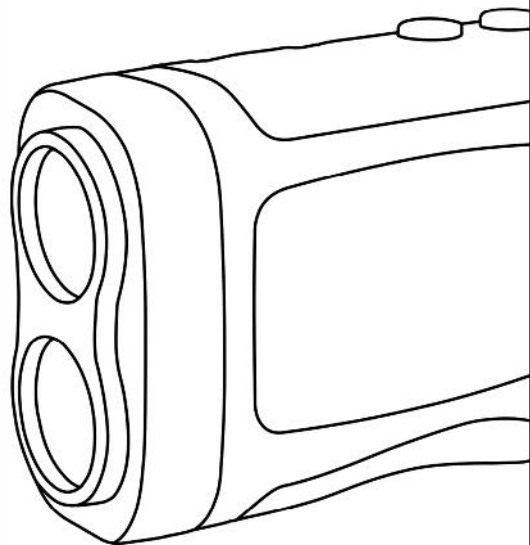
## OPERATION

- Adjust the eyepiece to make the object clear in the field of vision
- Click the ON button then align the centre aim point to the desired object
- Re-click the ON button for approximately 3 seconds to display the distance
- The RF5400 will turn off automatically
- The RF5400 is usually in standard mode, to change the mode press the MODE button and choose the appropriate option
- To change the unit of distance hold the MODE button for 3 seconds
- If the RF5400 is unable to give a reading it will display ' \_ \_ \_ '
- Distance measuring is affected by the weather and the characteristics of an object.

## WARNING

- DO NOT clean the lens with hands, please use the appropriate lens cloth
- DO NOT invert the battery
- The battery should be taken out of the RF5400 if not in use for long periods of time
- The RF5400 should be stored in a cool dry place
- Optimum operating temperature -20 C / 40 C
- The MODE and ON button should not be pressed together
- The RF5400 should only be repaired by qualified professionals. Please DO NOT disassemble or repair the product on your own or your warranty will be rendered invalid

**HAWKE**<sup>®</sup>  
SPORT OPTICS



**RF5400**  
**Precision Laser Range Finder**

## OVERVIEW

The RF5400 is a precision laser range finder combined with the function of the common telescope, it is capable of measuring objects up to a distance of 400m. The RF5400 requires a 3V CR2 battery and has a power save function enabling it to turn off when not in use. The products lightweight compact design makes it convenient to carry. The RF5400 is commonly used in hunting, golf, site survey and construction, it is also capable of measuring small objects such as electrical wires.

## RF5400

1. MODE button
2. ON button
3. Telescope objective
4. Laser reception objective
5. Battery compartment
6. Adjustable eyepiece



## SPECIFICATION

- Range: 5-400m
- Measurement pattern: semiconductor laser measurement (harmless for eyes)
- Error in measurement: + 1m +0.1%
- Measurement display: Inner-vision-field LCD display
- Effective objective lens aperture: 25 mm
- File coating: multiple file coating
- Outlet pupil diameter: 3.8 mm
- Outlet pupil distance: 12 mm
- Alignment focus: eyepiece focusing adjustment
- Magnification: 6x
- Vision field within 1000 m: 122 m
- Modes of measurement: RAIN, REFL, >150
- Battery: 1x 3V CR2
- Dimensions: 113×72×43 mm
- Weight: 222g

## WARRANTY

Your new precision laser range finder has a 12 month warranty against defects in material and/or workmanship provided that the unit has not been abused, used incorrectly, taken apart or serviced by any party other than Hawke Optics.

This warranty does not cover failure from fair wear and tear. This warranty is limited to the original purchaser and is not transferable. Your receipt of purchase should accompany any warranty claim. No guarantee can be given if dated proof of purchase is not supplied. Should any original defect appear, package the unit and return prepaid to the Service Manager at the address of your Hawke Optics distributor, for repair or replacement at the option of the guarantor.

The name, address and telephone number of the sender must be included in the package along with a note explaining the defect found. This guarantee is in addition to and does not affect any rights, which the consumer may have by virtue of the sale of goods act.

Contact your retailer or distributor listed at:

[www.hawkeoptics.com](http://www.hawkeoptics.com)